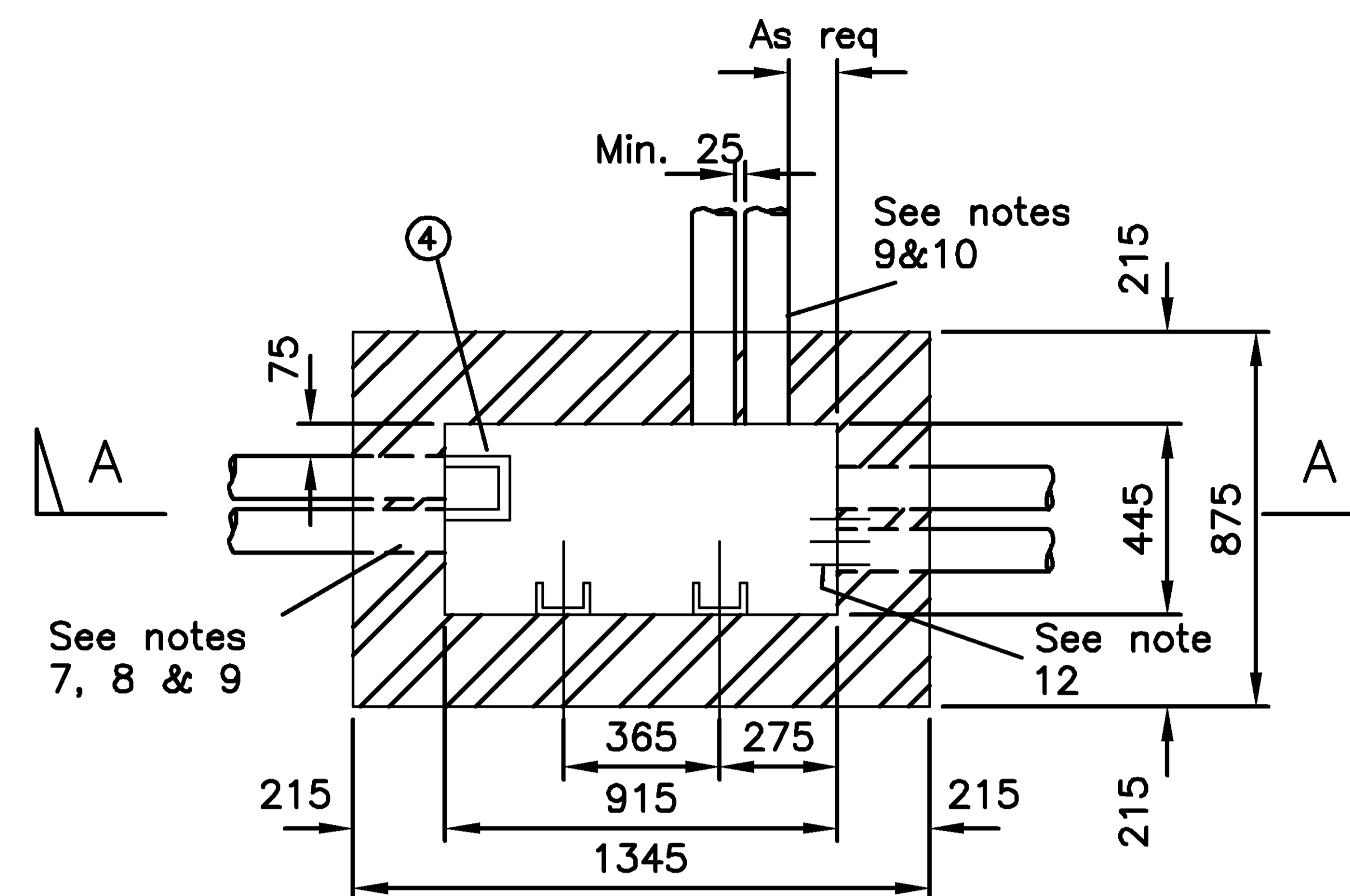


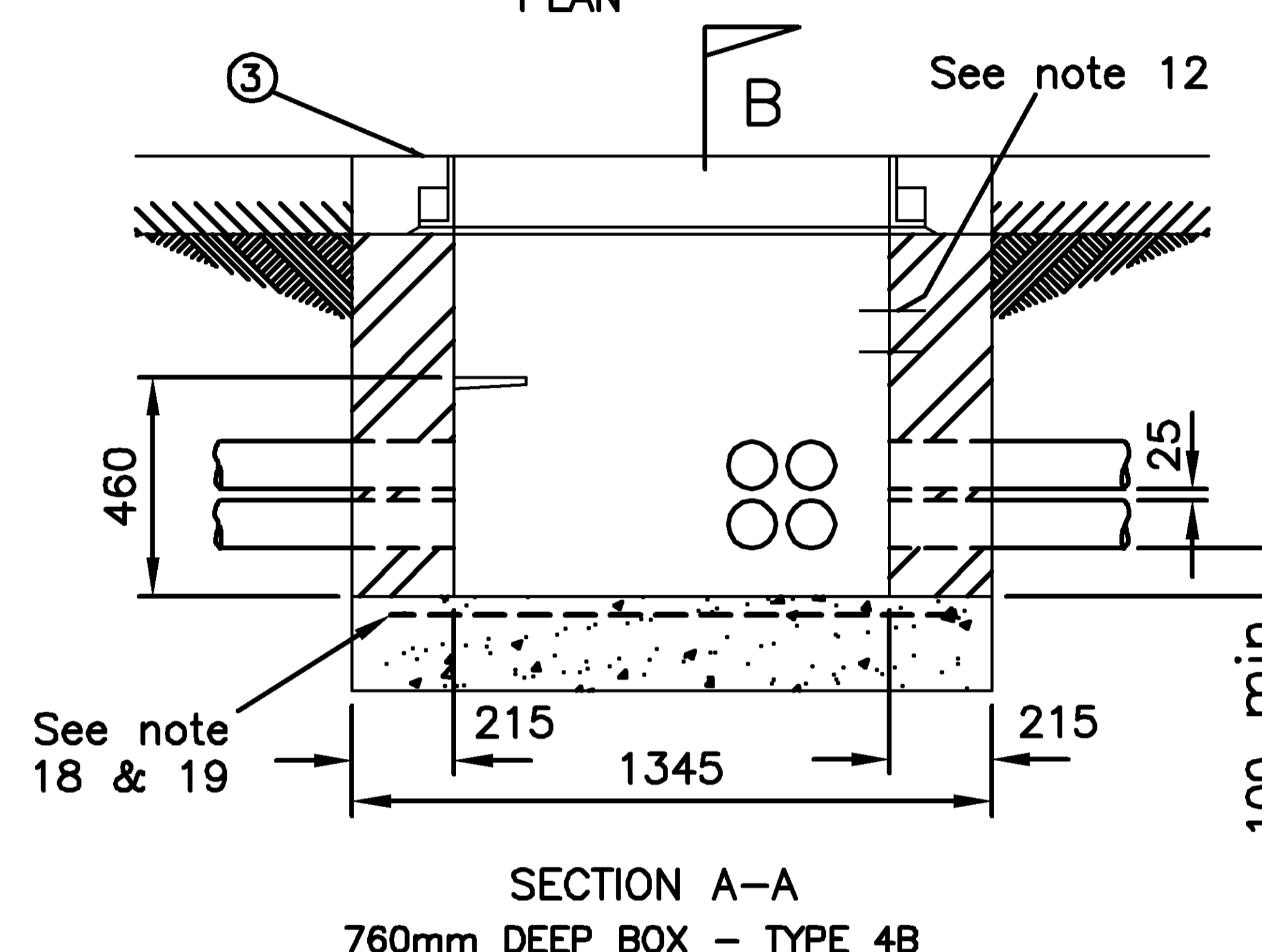
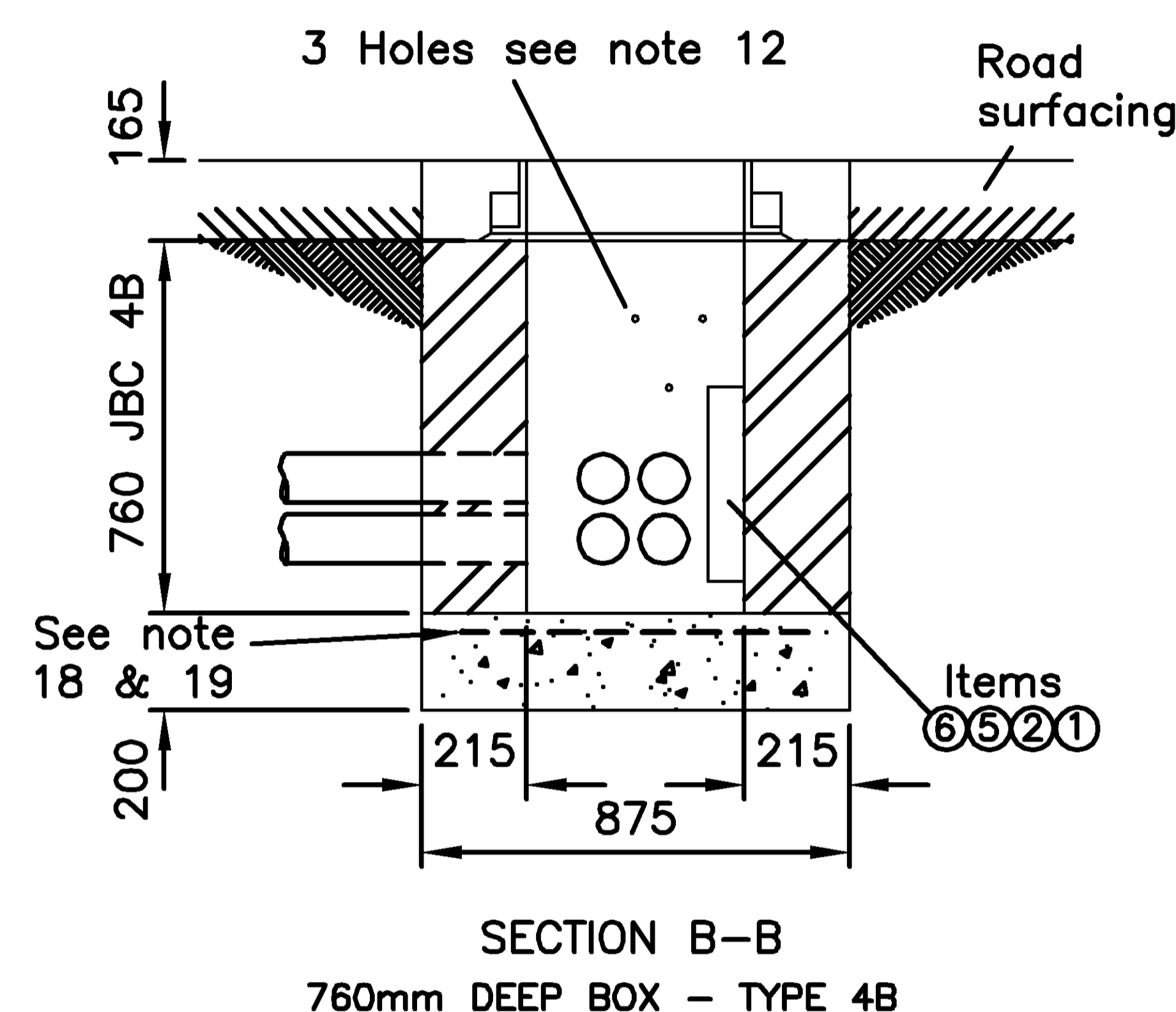
NOTES

- THIS DRAWING TO BE READ IN CONJUNCTION WITH ALL OTHER DRAWINGS, DOCUMENTATION AND SPECIFICATIONS RELATING TO THIS JOINTBOX TYPE CONSTRUCTION
- WORKMANSHIP, MATERIALS AND METHOD OF CONSTRUCTION ARE TO COMPLY WITH ALL CURRENT RELEVANT CONTRACT DOCUMENTS, BRITISH STANDARDS, AND CODES OF PRACTICE (RELEVANT TO THE CONSTRUCTION INDUSTRY) AND ACCEPTED CONSTRUCTION PRACTICE.
- ALL EXISTING SERVICES POSITIONS ARE TO BE VERIFIED ON SITE BY THE CONTRACTOR PRIOR TO STARTING THE WORKS.
- ALL ACCEPTED SAFE DIGGING PRACTICES AND SAFE METHODS OF WORKING ARE TO BE EMPLOYED DURING THE INSTALLATION OF THE JOINTBOX.
- CONCRETE TO BE GRADE C32/40 WITH A WATER CEMENT RATIO 0.4. MIN. CEMENT CONTENT 380kg/m³. AGGREGATE MAX. SIZE 20mm. ALL IN ACCORDANCE WITH BS8500.
- ALL DUCTS SHOWN ARE BASED ON MAXIMUM RECOMMENDED VALUES FOR DUCT TYPE 54D.
- END DUCTS TO BE IN LINE.
- WHERE POSSIBLE DUCTS TO BE POSITIONED NOT LESS THAN 75mm FROM A SIDE WALL.
- MINIMUM REQUIRED DUCTS SHOWN SOLID FOR EACH JOINTBOX VARIATION.
- SHORT LENGTHS OF DUCTS 54D TO BE USED ON NON-DUCTED ROUTES, APPROPRIATE DUCT TO BE USED ON DUCTED ROUTES.
- ITEMS 1&2 ARE SHOWN IN TYPICAL POSITIONS, THEY MAY BE REPOSITIONED OR INCREASED TO SUIT LOCAL CONDITIONS.
- DRILL 1 SET OF 3 HOLES USING A 12mm MASONRY DRILL BIT TO A DEPTH OF 80mm FOR POSSIBLE FUTURE FITTING OF MOBRA BRACKET, SEE DRAWING CN15562 FOR DRILLING DETAILS.
- IF OTIAN MOBRA BRACKET IS TO BE FITTED, LEAVE OUT WALL TYPE BEARERS AND STEPS. BOLTS FOUNDATION FOR WALL TYPE BEARERS SHOULD BE FITTED.
- STEP MANHOLE TO BE FITTED IN ALL BOXES DEEPER THAN 700mm. THE STEP TO BE PROVIDED IN THE POSITION SHOWN ON THE END WALL REMOTE FROM ANY SIDE ENTRY DUCT.
- FOR METHOD OF FIXING ITEM 4 SEE DRAWING CN1961.
- BRICKS USED TO BE (MINIMUM) CLASS B ENGINEERING BRICKS. MORTAR TO BE CLASS (iii) 1:5 CEMENT:SAND RATIO (MAXIMUM) OR 1:1:5 CEMENT:LIME:SAND.
- BRICKS AND MORTAR TO BE IN ACCORDANCE WITH BS5628.
- 1 N^o LAYER A393 FABRIC MESH REINFORCEMENT IN TOP OF THE SLAB MINIMUM COVER 45mm TO ANY CONCRETE FACE. PROPRIETARY SPACERS TO BE USED.
- MESH TO BE GRADE B500B OR B500C CONFORMING TO BS4483.
- ALL WORKS TO BE UNDERTAKEN IN ACCORDANCE WITH THE SPECIFICATION FOR HIGHWAY WORKS (SHW) AND ALL SUBSEQUENT AMENDMENTS.
- ALL BACKFILL MATERIAL TO BE CLASS 6N TYPE.
- DRAWING NOT TO BE USED 3 YEARS AFTER CURRENT STRUCTURAL DESIGN DATE (SEE TITLE TABLE).

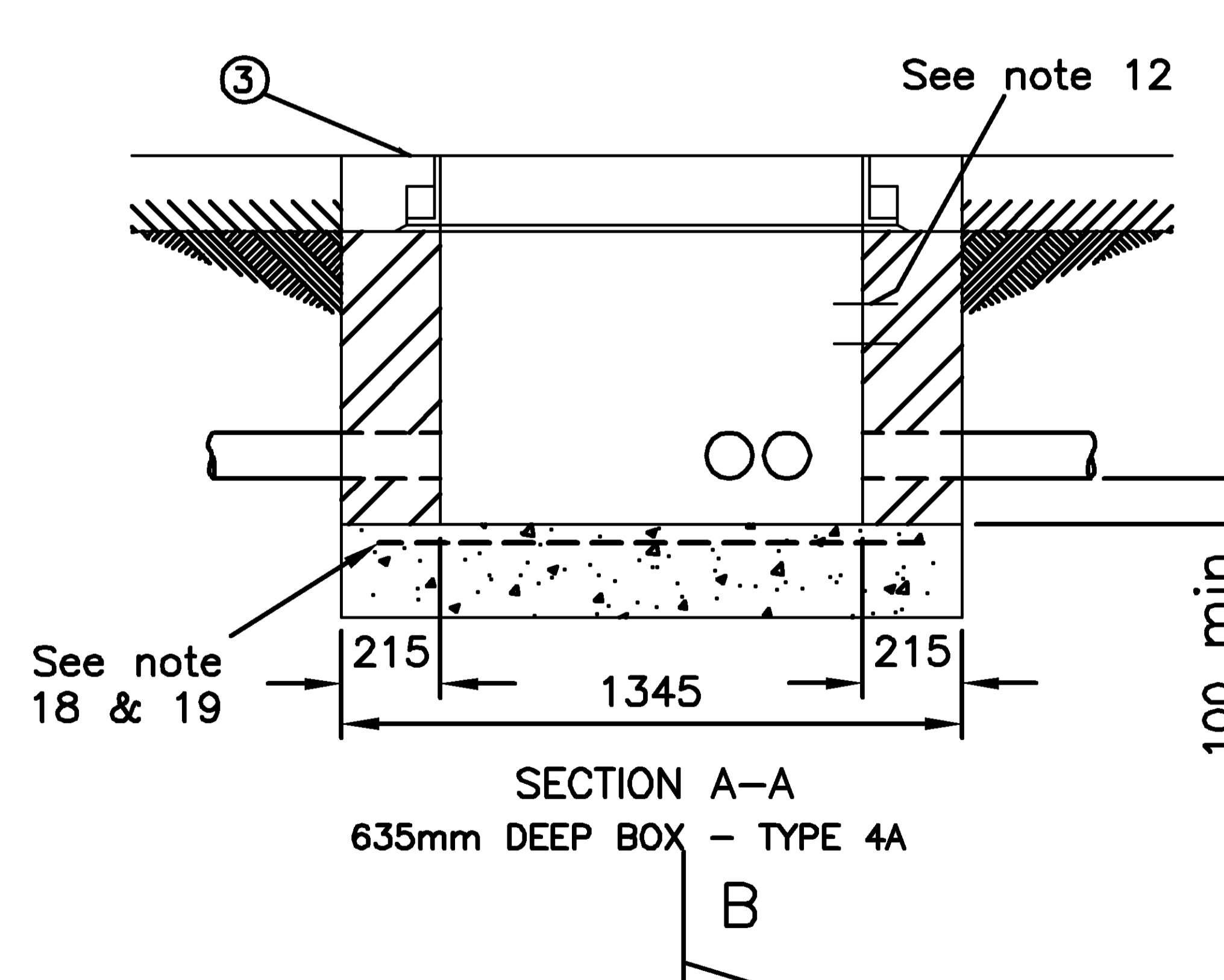
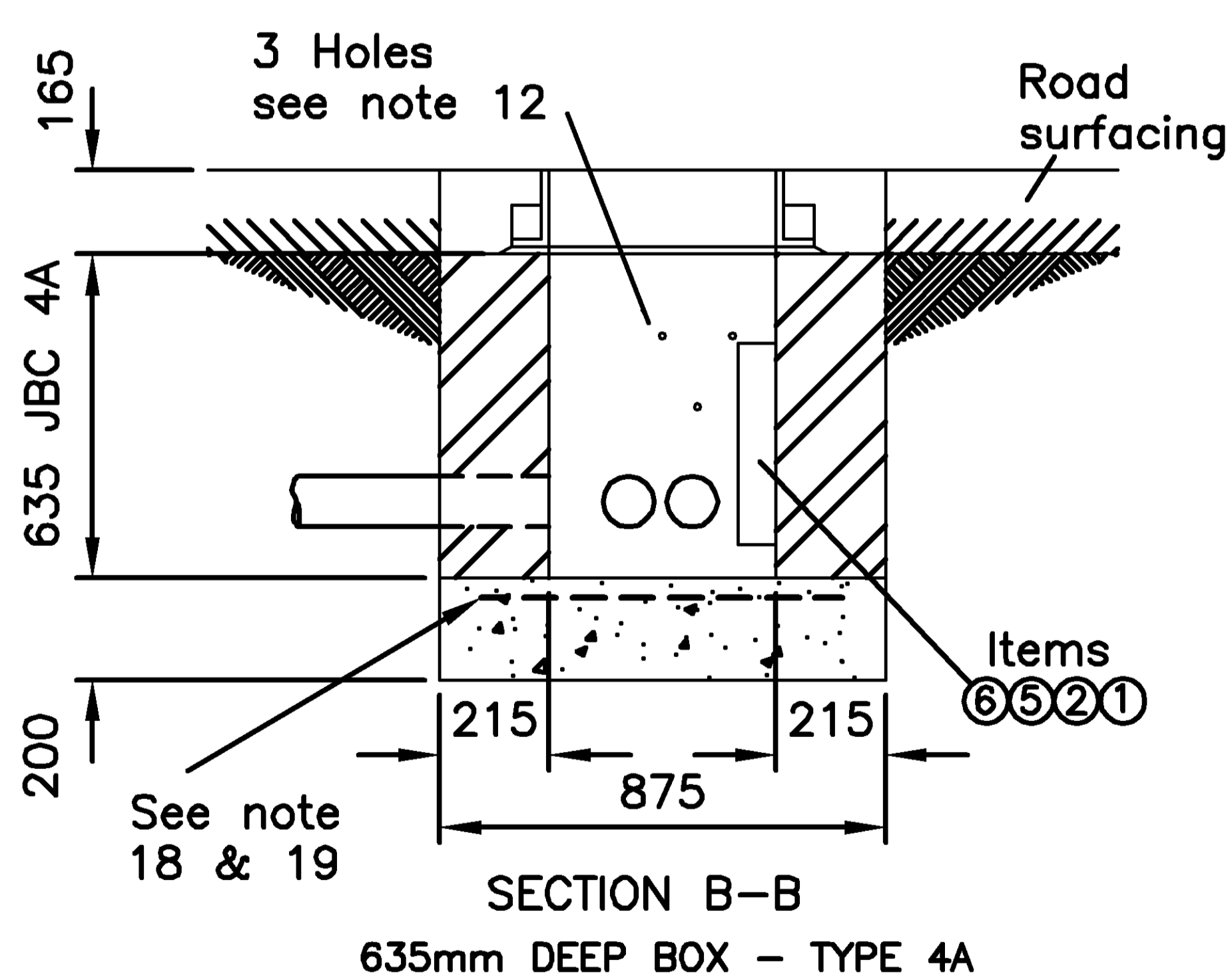
SCHEDULE				
ITEM	DESCRIPTION	DRWG	No. OFF	
			4A	4B
1	BOLTS, FOUNDATION, INDENTED No.2	CN1166	4	4
2	CABLE BEARERS, WALL TYPE, No.2	CN1059	2	2
3	FRAME & COVER No.4	----	1	1
4	STEPS, MANHOLE	CN1961	-	1
5	PIN LOCKING CABLE BEARER	CN1301	2	2
6	BRACKET CABLE BEARER No.8	CN1069	2	2



JBC 4A 635mm DEEP
JBC 4B 760mm DEEP



TOLERANCES:- CN15456
BEDDING MATERIAL +5
VOIDAGE 0.5%
MORTAR JOINTS ±5
DUCT ENTRY POSITION ±25mm
DUCT FLUSH WITH WALL -10mm
WALL FLATNESS ±11mm
FRAME & COVER ROCKING NIL
F & C SURROUND IN UNMADE ±5
F & C UN SUPPORTED OVER BOX +10
F & C LEVEL WITH HIGHWAY NIL
JOINT BOX INTERNAL LENGTH & WIDTH ±15
JOINT BOX INTERNAL HEIGHT/DEPTH ±10mm
STEEL DEPTH OF COVER ±5mm
STEEL DEPTH TO LUG ±5mm
STEP POSITION ±15mm
STEP HORIZONTAL ±5mm
VERTICALITY OF WALLS ±15mm
SLAB THICKNESS -10 TO +150mm
BOLT FOUNDATION ±5mm
OTIAN BOLT HOLES ±2mm



ANY MODIFICATION TO THE DRAWING OR THE USE OF ALTERNATIVE ITEMS TO THOSE SPECIFIED MUST BE AGREED WITH THE DESIGNER.

DIMENSIONS IN mm UNLESS OTHERWISE STATED

© British Telecommunications plc 2008

DO NOT SCALE

ORIGINAL SCALE 1:20

A2 A3	DRN OMS	MATERIAL	-	Drawing format updated	A	TOLERANCES TO BS8666, BS8110 CLAUSE 6.11 BS5606 TABLES 2 & 3 CN15456	JOINT BOX CARRIAGEWAY JBC 4 A & B BRICKWORK CONSTRUCTION	REFERENCES SPEC LN 550 CN15562			
	CKD OMS								FINISH	-	LAST AMENDMENT BY OMS CHANGED FROM ISSUE B OPENREACH AMENDMENT DATE WAS 06/11/08
CERTIFICATION DESIGNER	BT	MM	MM	11/02/09	ISSUE	OPENREACH	BEA3	CN 15644			
DATE	Dec 2007										

CN15644S03