

**TOLERANCES: - CN15456**

BEDDING MATERIAL +5mm

CEMENT MORTAR -20mm

VOIDAGE 0.5%

BRICKWORK MORTAR JOINTS ±5mm

WALL FLATNESS ±11mm

DUCT ENTRY POSITION ±25mm

DUCT FLUSH WITH WALL -10mm

F & C ROCKING NIL

F & C SURROUND IN UNMADE ±5mm

F & C UNSUPPORTED OVER BOX +10mm

STRUCTURE INTERNAL LENGTH & WIDTH ±15mm

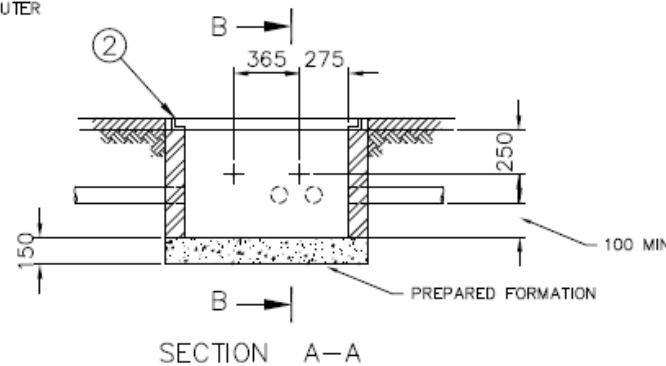
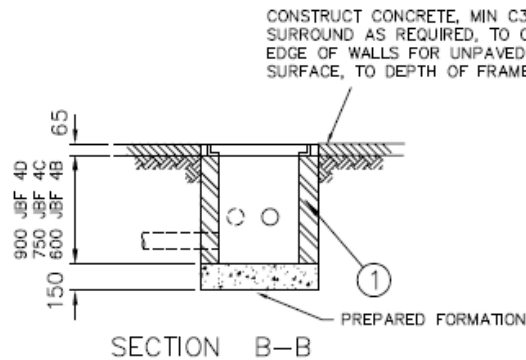
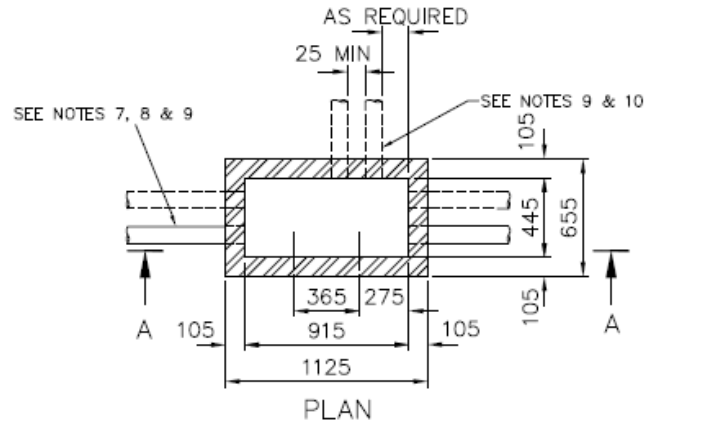
STRUCTURE INTERNAL HEIGHT ±10mm

VERTICALITY OF WALLS ±15mm

SLAB THICKNESS -10mm TO +150mm

BOLT FOUNDATION ±5mm

SCHEDULE					
ITEM	DESCRIPTION	No. OFF			
		DRG	4B	4C	4D
1	BOLTS, FOUNDATION, INDENTED No.2	CN1166	4	4	4
2	FRAME & COVER FW/DW No.4C	CN1912	1	1	1
3	STEPS, MANHOLE No.1	CN1961	-	1	1



**NOTES**

- THIS DRAWING TO BE READ IN CONJUNCTION WITH ALL OTHER DRAWINGS, DOCUMENTATION AND SPECIFICATIONS RELATING TO THIS JOINTBOX TYPE CONSTRUCTION.
- WORKMANSHIP, MATERIALS AND METHOD OF CONSTRUCTION ARE TO COMPLY WITH ALL CURRENT RELEVANT CONTRACT DOCUMENTS, BRITISH STANDARDS, EUROCODES AND CODES OF PRACTICE (RELEVANT TO THE CONSTRUCTION INDUSTRY) AND ACCEPTED CONSTRUCTION PRACTICE.
- ALL EXISTING SERVICES POSITIONS ARE TO BE VERIFIED ON SITE BY THE CONTRACTOR PRIOR TO STARTING THE WORKS.
- ALL ACCEPTED SAFE DIGGING PRACTICES AND SAFE METHODS OF WORKING ARE TO BE EMPLOYED DURING THE INSTALLATION OF THE JOINTBOX.
- CONCRETE TO BE GRADE C35/45 WITH A WATER CEMENT RATIO 0.4. MIN. CEMENT CONTENT 380kg/m<sup>3</sup>. AGGREGATE MAX. SIZE 20mm. ALL IN ACCORDANCE WITH BS8500 (BS EN206).
- ALL DUCTS SHOWN ARE BASED ON MAXIMUM RECOMMENDED VALUES FOR DUCT TYPE 54D.
- END DUCTS TO BE IN LINE.
- WHERE POSSIBLE DUCTS TO BE POSITIONED NOT LESS THAN 75mm FROM A SIDE WALL.
- MINIMUM REQUIRED DUCTS SHOWN SOLID FOR EACH JOINTBOX VARIATION.
- SHORT LENGTHS OF DUCTS 54D TO BE USED ON NON-DUCTED ROUTES, APPROPRIATE DUCT TO BE USED ON DUCTED ROUTES.
- ITEMS 1&2 ARE SHOWN IN TYPICAL POSITIONS, THEY MAY BE REPOSITIONED OR INCREASED TO SUIT LOCAL CONDITIONS.
- BRICKS USED TO BE (MINIMUM) CLASS B ENGINEERING BRICKS. MORTAR TO BE CLASS (iii) 1:5 CEMENT:SAND RATIO (MAXIMUM) OR 1:1:5 CEMENT:LIME:SAND.
- BRICKS AND MORTAR TO BE IN ACCORDANCE WITH BS EN1996.
- ALL WORKS TO BE UNDERTAKEN IN ACCORDANCE WITH THE SPECIFICATION FOR HIGHWAY WORKS (SHW) AND ALL SUBSEQUENT AMENDMENTS.
- ALL BACKFILL MATERIAL TO BE CLASS 6N TYPE.

ANY MODIFICATION TO THE DRAWING OR THE USE OF ALTERNATIVE ITEMS TO THOSE SPECIFIED **MUST** BE AGREED WITH THE DESIGNER.

DIMENSIONS IN mm UNLESS OTHERWISE STATED

© British Telecommunications plc 2010

DO NOT SCALE

ORIGINAL SCALE 1:20

A2 A3	DRN GP CKD IM	MATERIAL -	Newsites Review 27/11/16 C.M	C	JOINT BOX FOOTWAY JBF 104 NEWSITES	REFERENCES SPEC LN 550
	CERTIFICATION DESIGNER DC CUENT DC	FINISH -				
DATE 22/12/10			BT OMS 14.10.15	ISSUE Openreach	BEA3	CN 15727
			AMENDMENT			SHT 01 OF 01