

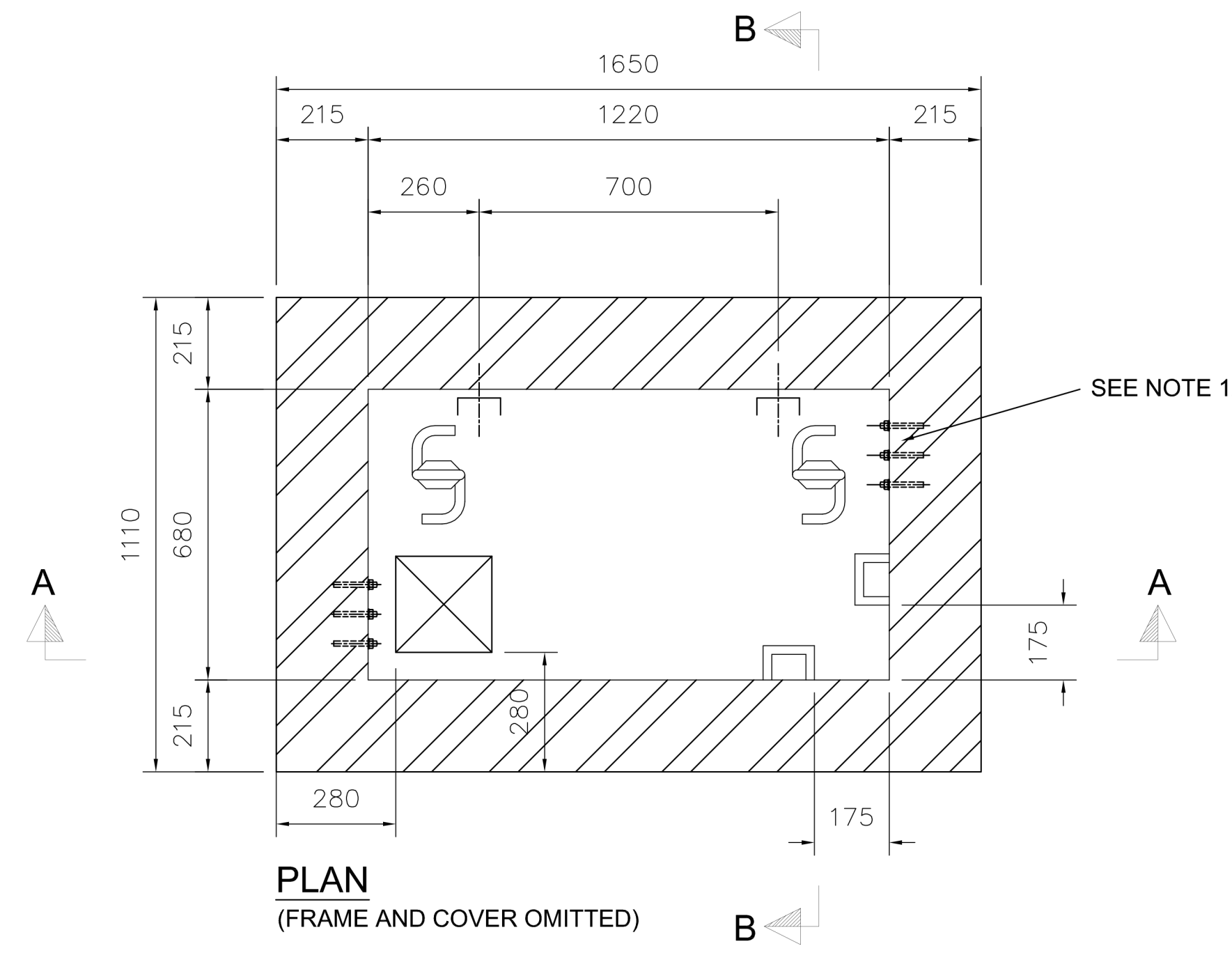
NOTES

- THIS DRAWING TO BE READ IN CONJUNCTION WITH ALL OTHER DRAWINGS, DOCUMENTATION AND SPECIFICATIONS RELATING TO THIS JOINTBOX TYPE CONSTRUCTION.
- WORKMANSHIP, MATERIALS AND METHOD OF CONSTRUCTION ARE TO COMPLY WITH ALL CURRENT RELEVANT CONTRACT DOCUMENTS, BRITISH STANDARDS, EUROCODES AND CODES OF PRACTICE (RELEVANT TO THE CONSTRUCTION INDUSTRY) AND ACCEPTED CONSTRUCTION PRACTICE.
- ALL EXISTING SERVICES POSITIONS ARE TO BE VERIFIED ON SITE BY THE CONTRACTOR PRIOR TO STARTING THE WORKS.
- ALL ACCEPTED SAFE DIGGING PRACTICES AND SAFE METHODS OF WORKING ARE TO BE EMPLOYED DURING THE INSTALLATION OF THE JOINTBOX.
- CONCRETE TO BE GRADE C35/45 WITH A WATER CEMENT RATIO 0.4. MIN. CEMENT CONTENT 380kg/m³. AGGREGATE MAX. SIZE 20mm. ALL IN ACCORDANCE WITH BS8500 (BS EN206).
- ALL DUCTS SHOWN ARE BASED ON MAXIMUM RECOMMENDED VALUES FOR DUCT TYPE 54D.
- END DUCTS TO BE IN LINE.
- WHERE POSSIBLE DUCTS TO BE POSITIONED NOT LESS THAN 75mm FROM A SIDE WALL.
- MINIMUM REQUIRED DUCTS SHOWN SOLID FOR EACH JOINTBOX VARIATION.
- SHORT LENGTHS OF DUCTS 54D TO BE USED ON NON-DUCTED ROUTES, APPROPRIATE DUCT TO BE USED ON DUCTED ROUTES.
- ITEMS 1&2 ARE SHOWN IN TYPICAL POSITIONS, THEY MAY BE REPOSITIONED OR INCREASED TO SUIT LOCAL CONDITIONS.
- DRILL 2 SET OF 3 HOLES USING A 12mm MASONRY DRILL BIT TO A DEPTH OF 80mm FOR POSSIBLE FUTURE FITTING OF MOBRA BRACKET, SEE DRAWING CN15562 FOR DRILLING DETAILS.
- STEP MANHOLE TO BE FITTED IN ALL BOXES DEEPER THAN 700mm. THE STEP TO BE PROVIDED IN THE POSITION SHOWN ON THE END WALL REMOTE FROM ANY SIDE ENTRY DUCT.
- FRAME COVER TO BE INSTALLED TO HA104 INSTALLATION PRACTICES.
- BRICKS USED TO BE (MINIMUM) CLASS B ENGINEERING BRICKS. MORTAR TO BE CLASS (iii) 1:5 CEMENT:SAND RATIO (MAXIMUM) OR 1:1:5 CEMENT:LIME:SAND.
- BRICKS AND MORTAR TO BE IN ACCORDANCE WITH BS EN1996.
- BRICKWORK TO BE LAID IN ENGLISH GARDEN WALL BOND, FLUSH POINTED.
- 1No. LAYER A393 FABRIC MESH REINFORCEMENT IN TOP OF THE SLAB MINIMUM COVER 55mm TO ANY CONCRETE FACE. PROPRIETARY SPACERS TO BE USED AS REQUIRED.
- MESH TO BE GRADE B500B OR B500C CONFORMING TO BS4483.
- ALL WORKS TO BE UNDERTAKEN IN ACCORDANCE WITH THE SPECIFICATION FOR HIGHWAY WORKS (SHW) AND ALL SUBSEQUENT AMENDMENTS.
- ALL BACKFILL MATERIAL IS TO BE CLASS 6N TYPE.
- ALL CONSTRUCTION JOINTS TO BE AS PER CLAUSE 1710 SHW.

JOINT BOX DEPTH VARIATION			
TYPE	DEPTH	REF DIM.	No. OF DUCTS
A	900	1290	4

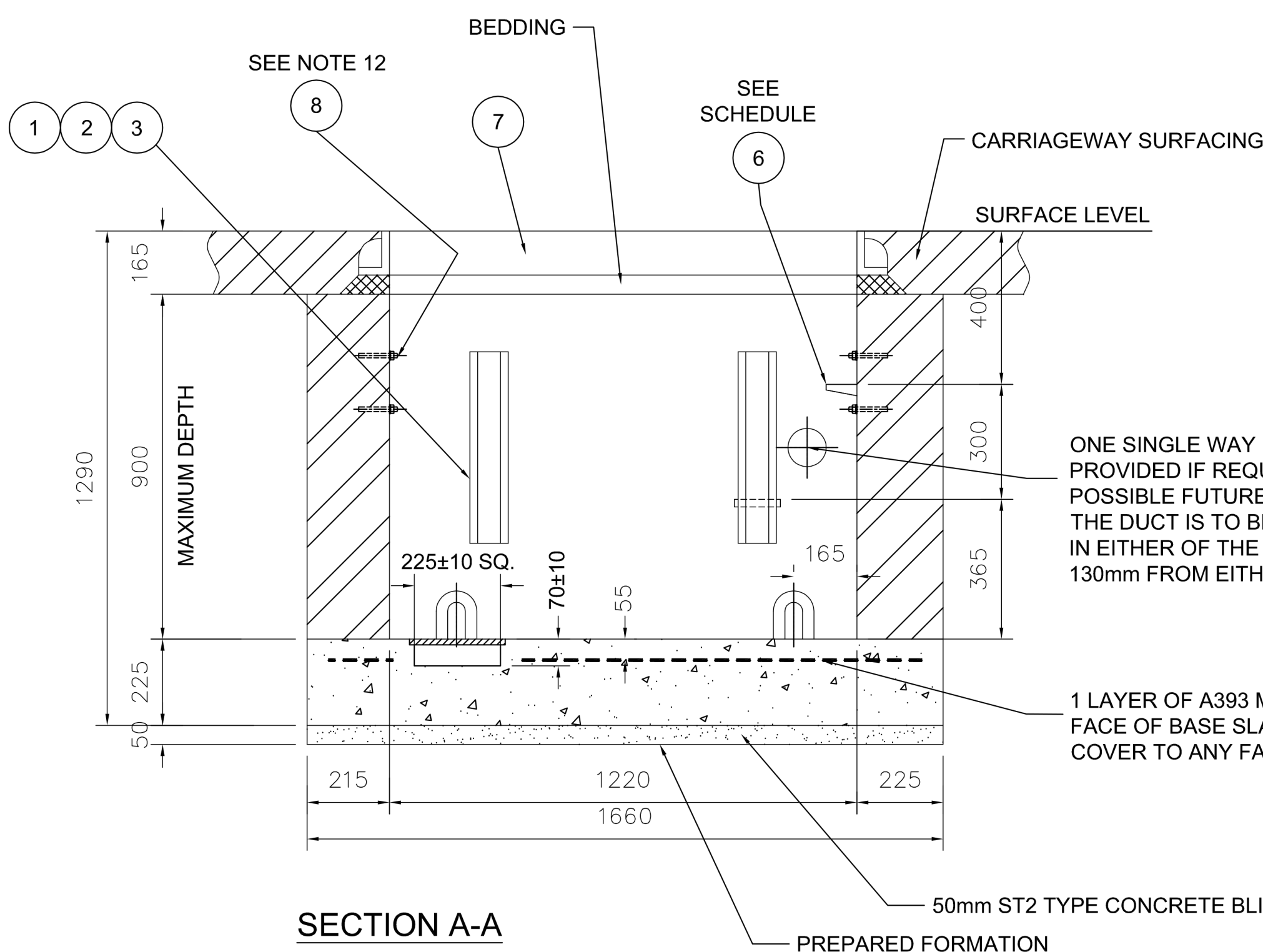
SCHEDULE			
ITEM	DESCRIPTION	DRAWING	QTY
			JB C/W 6
1	BOLT FOUNDATION INDENTED No.2	CN1166	4
2	CABLE BEARER WALL TYPE No.3	CN1061	2
3	BRACKET CABLE BEARER No.12	CN1069	2
4	GRATING SUMP No.2A	CN9165	1
5	IRON ANCHOR No.4	CN1162	2
6	STEPS MANHOLE No.1	CN1168	2
7	FRAME & COVER CARRIAGEWAY No.2	CN1950/ CN13890	1
8	M12 X 100 LG. THROUGH BOLT RAWPLUG ITEM NO. 56-840 OR EQUIV. SEE NOTE 12.	-	6

TOLERANCES:- CN15456	
ANCHOR IRON POSITION ±50mm	TOP OF DEPTH PLATE ±4mm
BEDDING MATERIAL ±5	
VOIDAGE 0.5%	
WALL FLATNESS ±11mm	
F & C LEVEL WITH HIGHWAY NIL	
F & C ROCKING NIL	
F & C UNSUPPORTED IN UNMADE ±5mm	
F & C UNSUPPORTED OVER BOX +5mm	
CHAMBER INTERNAL LENGTH & WIDTH ±25mm	
CHAMBER INTERNAL HEIGHT ±15mm	
STEEL BARS ALIGNMENT	
VERT & HORIZ ±15mm	
NEAR FACE TO FAR FACE ±15mm	
STEEL CAGE GRID PATTERN ±10mm	
STEEL DEPTH OF COVER ±5mm	
STEEL DEPTH TO LUG ±5mm	
STEP POSITION ±15mm	
STEP HORIZONTAL ±5mm	
SUMP POSITION ±25mm	
SUMP DEPTH ±10mm	
ROUND SUMP 230Ø ±5mm	
VERTICALITY OF WALLS ±15mm	
SLAB THICKNESS -10 TO +150mm	

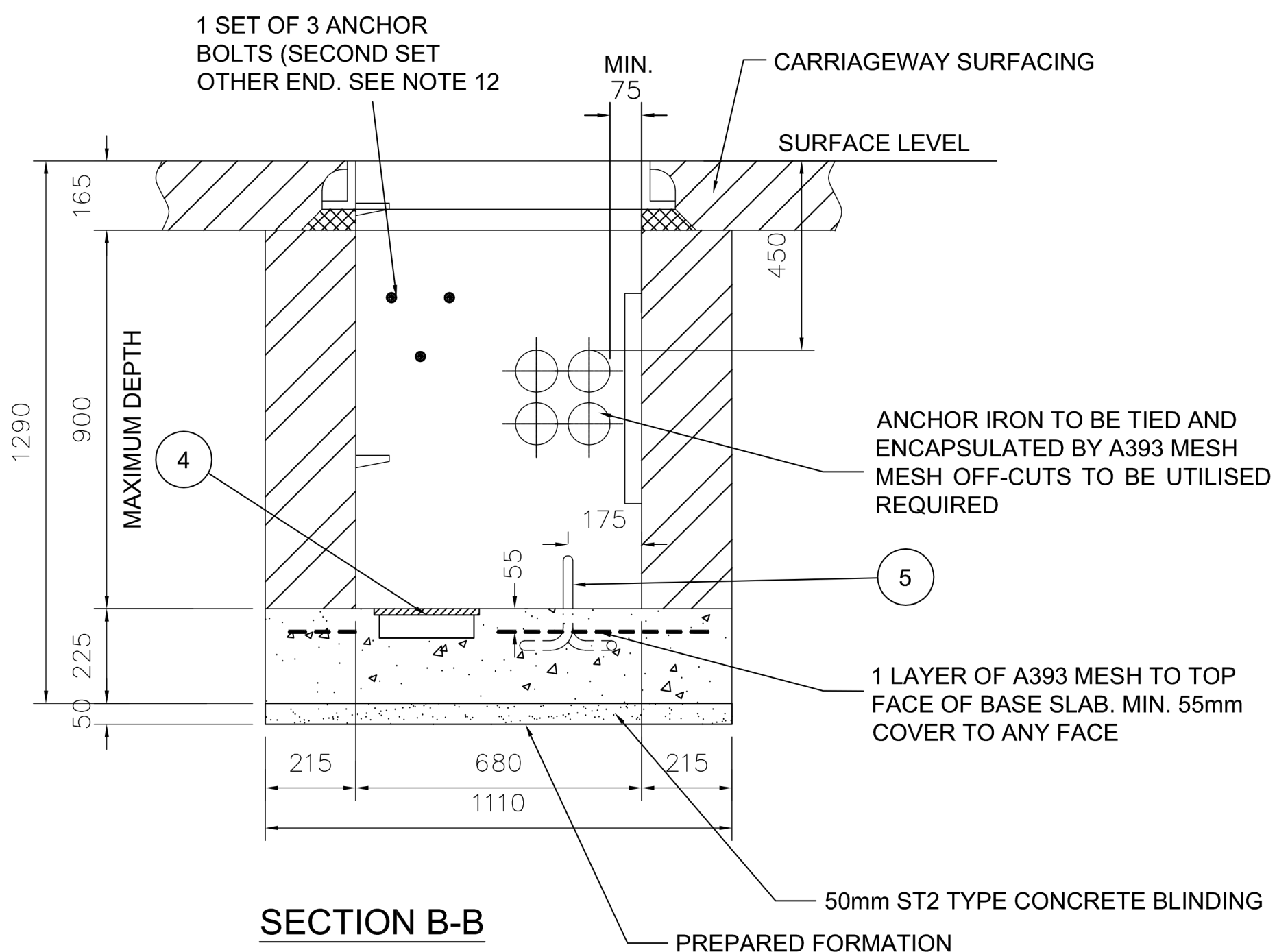


SEE NOTE 12

PLAN
(FRAME AND COVER OMITTED)



SECTION A-A



SECTION B-B

DUCT DEPTHS OF COVER	
MINIMUM DEPTH OF COVER TO BE IN ACCORDANCE WITH CURRENT LN 550 SPECIFICATION AND INDUSTRY STANDARD GUIDELINES AND APPROVED BEST PRACTICES:-	
FOOTWAY (F/W)	250mm (MIN)
CARRIAGEWAY	450mm (MIN) **
** SUBJECT TO DUCTS BEING INSTALLED BELOW DEPTH OF STRUCTURAL BUILD UP FOR C/W CONSTRUCTION FOR RELEVANT C/W CATEGORY.	

BOX FOR USE ON NEW SITES & TYPE 4 CARRIAGEWAYS ONLY

DIMENSIONS IN mm UNLESS OTHERWISE STATED © British Telecommunications plc 2000 DO NOT SCALE ORIGINAL SCALE N/A

A1 A2	DRN R.S CKD T.C CERTIFICATION DESIGNER T&S Design CLIENT N/A	ANY MODIFICATION TO THE DRAWING OR THE USE OF ALTERNATIVE ITEMS TO THOSE SPECIFIED MUST BE AGREED WITH THE DESIGNER.	MATERIAL -	First Issue	A	JOINT BOX JBC2N	REFERENCES SEE NOTES D1000 BS8500, BS EN206 CN15562
	DATE 01/04/2021		FINISH -	BT RS 14.04.2021			Openreach
			AMENDMENT	ISSUE	SHT 01 OF 01		